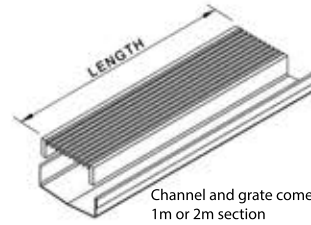
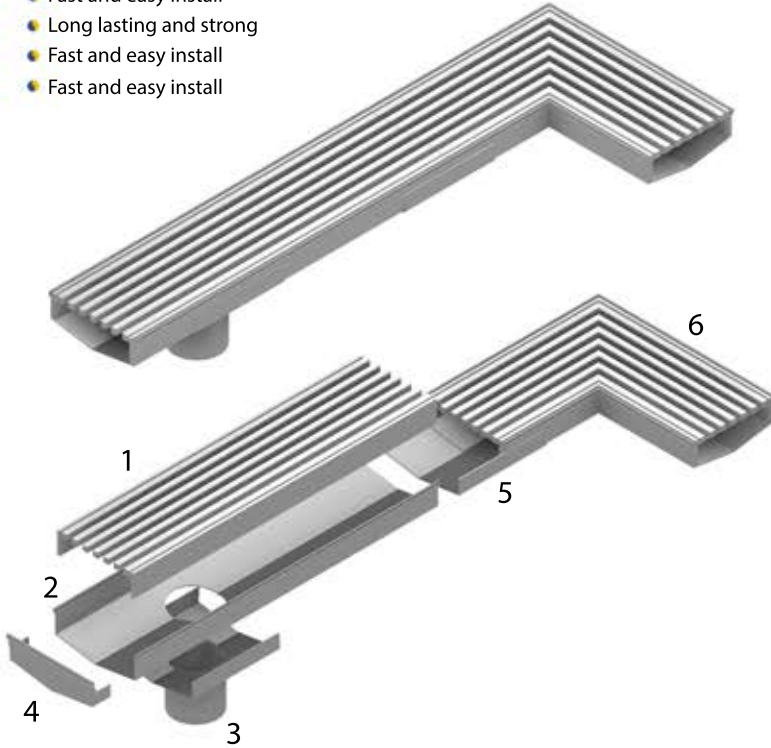


Squareline serie

Our sSquareline grate and channel system is made from high-quality stainless steel, ensuring durability and long-lasting performance. The modular design allows for easy installation and customization, making it ideal for a wide range of architectural projects.

- 100% SS304 material
- Fast and easy install
- Long lasting and strong
- Fast and easy install
- Fast and easy install



Channel and grate comes in standard length of 1m or 2m section



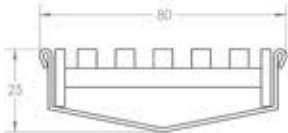
PART LIST

- | | | |
|---|--|--------------------------------------|
| 1 | | SS316 3x3 slim grate , class A and B |
| 2 | | SS316 V base channel |
| 3 | | SS316 DN75 and DN89 outlet |
| 4 | | SS316 End cap |
| 5 | | SS316 joiner plate |
| 6 | | SS316 corner grate and channel |

SIZES

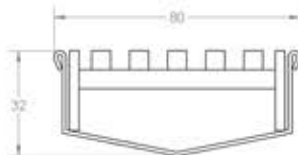
Square 80-25

80W x 25D



Square R80-32

80W x 32D



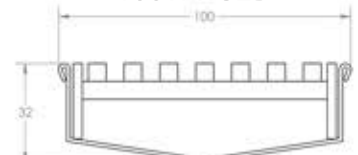
Square 100-25

100W x 25D

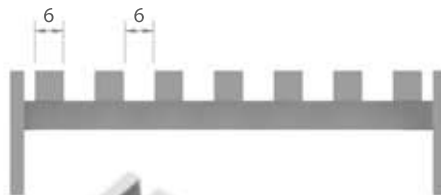


Square 100-32

100W x 32D



GRATE



Our squareline grate is designed with both form and function in mind, offering a stylish and modern look that complements any architectural design. The squareline profile of the grate allows for easy installation and customization, making it ideal for a wide range of projects.

